

Where others guess, you know

Polymath provides custom intelligence to investment funds

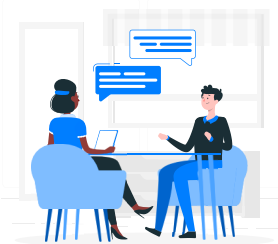


Open Source Intelligence

Quickly Filter the Noise to Focus on Key Insights

We analyze vast amounts of documents, **newspaper** articles, **podcasts**, **YouTube** channels, and other sources of information, individually approved by our clients.

This allows you to gain detailed **insights** into customer opinions about a company you are considering for investment. This also helps you monitor **crises** and **controversies** in real-time.



Competitive Intelligence

Customer Interviews

We conduct **market research**, focus groups, surveys, and interviews with the **customers** of companies in your portfolio, to uncover trends before they become widely known. We apply the same approach to **suppliers**, **employees**, **competitors**, or industry **experts** within the ecosystem, allowing a comprehensive view of the industry and its dynamics.

You can choose to receive raw data, in-depth analysis, or both, ensuring your decisions are grounded in **reliable** data.



Street Intelligence – Faster Than Bloomberg

Our Global Network of Private Investigators

We partner with local **private investigators** worldwide to uncover insights no one else has.

We capture **street-level photos** and **videos**. For example, we count trucks entering and exiting factories, monitor retail parking lots, track shipping at ports, and observe local weather patterns impacting agricultural and energy commodities. We uncover **production** levels, **inventories**, and **logistics** patterns, to detect **trends** weeks, if not months, before they become evident to the market.

We attend **events**, seminars, conferences, trade shows, shareholder meetings, and question participants to understand each actor's strategy.

We also **ask locals**. From a brewing strike at a Chilean copper mine, questionable accounting practices at an Indian chemical company, or rising customer dissatisfaction with a German pharmaceutical manufacturer, we ensure you are informed ahead of others.

Lastly, our ex-military intelligence officers analyze hour by hour **satellite** imagery to monitor unfolding wars and crises, providing clarity amidst uncertainty.

We deliver detailed **intelligence reports** or **quantifiable data**, backed by unquestionable **proof**, not mere speculation, all within **legal** boundaries.

Contact

Joris CAPEAU
Co-founder

joris@polymathintel.com

+33 6 22 98 34 82